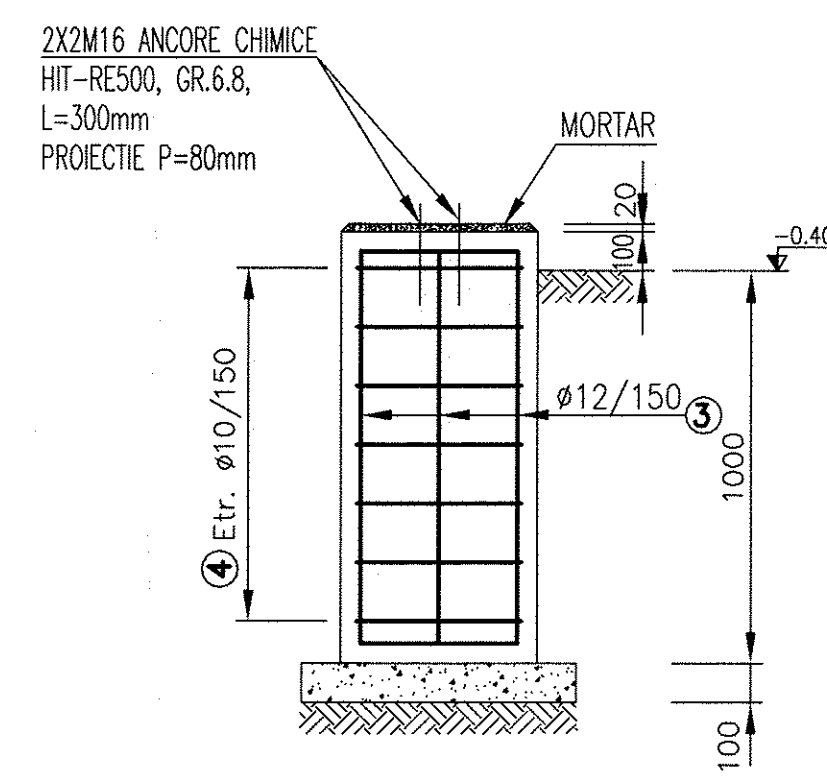
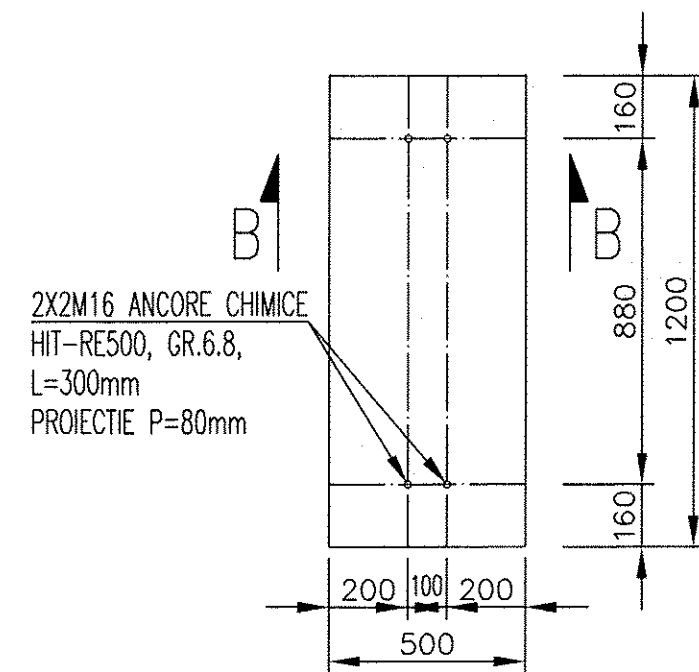
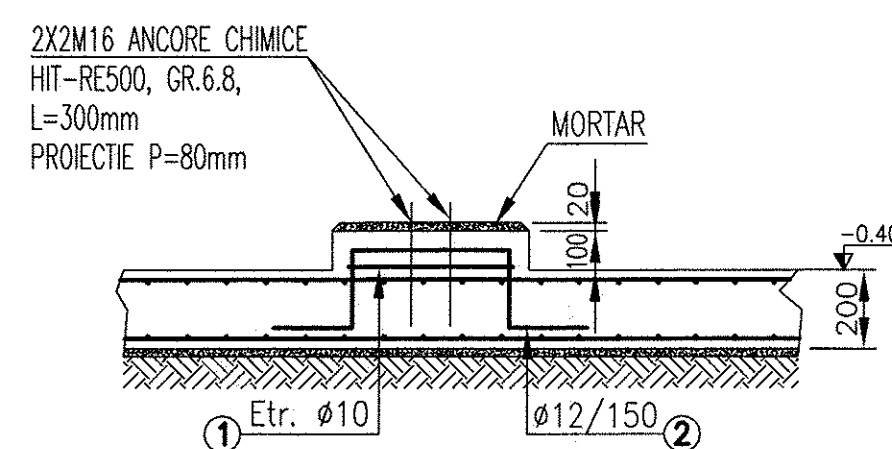
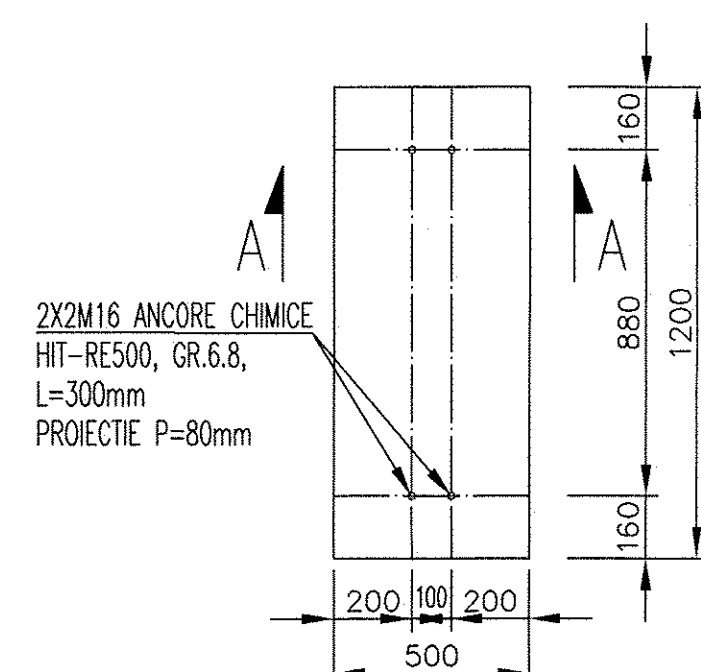


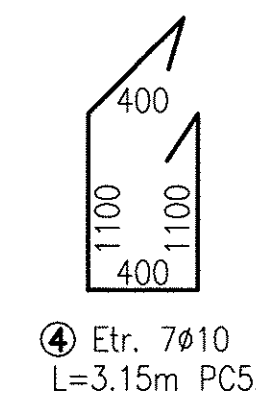
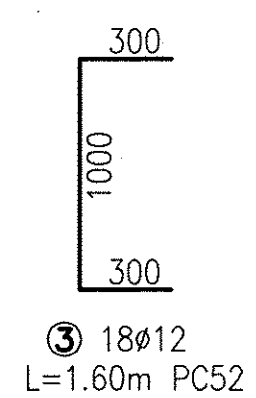
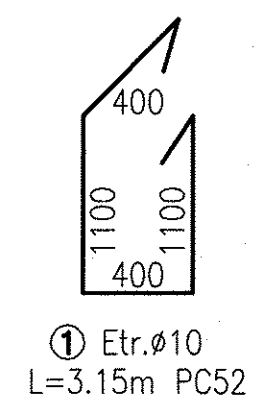
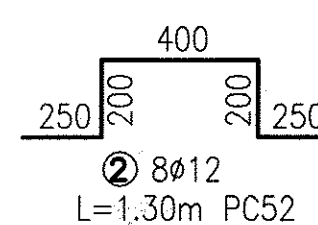
| EXTRAS DE ARMATURA FUNDATIE F1 | | | | | | | | |
|--------------------------------|-----------|------------------|---------------------|--------------------------|-------|-------|-------|------|
| Marca | Diametrul | Nr.bare elemente | | Lungimi in m a unei bare | L/Ø | | | |
| | | Intr-un element | In toate elementele | | PC52 | | | |
| | | | | | Ø8 | Ø10 | Ø12 | Ø14 |
| 1 | 10 | 1 | 1 | 3.15 | | 3.2 | | |
| 2 | 12 | 8 | 8 | 1.30 | | | 10.4 | |
| Total lungimi pe diametru | | | | | 0.0 | 3.2 | 10.4 | 0.0 |
| Kg/ml | | | | | 0.395 | 0.616 | 0.888 | 1.21 |
| Greutate pe diametre | | | | | 0 | 2 | 9 | 0 |
| Greutate totala Kg | | | | | 11 | | | |

| EXTRAS DE ARMATURA FUNDATIE F1 | | | | | | | | |
|--------------------------------|-----------|--------------------|------------------------|---------------------------|-------|-------|-------|------|
| Marca | Diametrul | Nr.bare elemente | | Lungimi in m unei bare | L/Ø | | | |
| | | Intr-un element | In toate elementele | | PC52 | | | |
| | | | | | Ø8 | Ø10 | Ø12 | Ø14 |
| 3 | 12 | 18 | 18 | 1.60 | | | 28.8 | |
| 4 | 10 | 7 | 7 | 3.15 | | 22.1 | | |
| Total lungimi pe diametru | | | | | 0.0 | 22.1 | 28.8 | 0.0 |
| Kg/ml | | | | | 0.395 | 0.616 | 0.888 | 1.21 |
| Greutate pe diametre | | | | | 0 | 14 | 26 | 0 |
| Greutate totala Kg | | | | | 39 | | | |



| FUNDATIE F1 (4 BUC.) | | |
|----------------------|----------------|-----------|
| DESCRIERE | UNITATE | CANTITATE |
| SAPATURA | m ³ | — |
| BETON ARMAT | m ³ | 0.10 |
| BETON DE EGALIZARE | m ³ | — |
| ARMATURA | Kg | 11.00 |



| FUNDATIE F2 (4 BUC.) | | |
|----------------------|----------------|-----------|
| DESCRIERE | UNITATE | CANTITATE |
| SAPATURA | m ³ | 3.63 |
| BETON ARMAT | m ³ | 0.66 |
| BETON DE EGALIZARE | m ³ | 0.10 |
| ARMATURA | Kg | 39.00 |



DOMENIUL DE EXIGENTA "A1"
CLASA DE IMPORTANTA "III"
CATEGORIA DE IMPORTANTA "C"

- MATERIALE :
- Beton de egalizare C12/15 - conf NE 012- 1:2007
 - Beton armat fundatie C30/37 - conf NE 012- 1:2007
 - Beton armat cuva C25/30 - conf NE 012- 1:2007
 - Agregate naturale de masa volumetrica normala conf. SR EN 12620:2003
 - Apa de amestec conf. SR EN 1008:2003
 - Otel beton B5T500 si PC52 conf. DIN 488:2009 si SR 438-1/2012
 - Mortar necontractil tip Sika 318 sau echivalent

- NOTE GENERALE:**
1. TOATE COTELE SUNT IN MM SI ELEVATIILE SUNT IN M.
 2. TOATE LUCRARILE DE BETON VOR FI IN CONFORMITATE CU SPECIFICATIILE PROIECTULUI.
 3. LUCRARILE DE SAPATURA SI UMLUTURA VOR RESPECTA STANDARD C169-88 & NP 125-2010.
 4. INAINTEA INCEPERII TURNARII BETONULUI, GEOTEHNICIANUL VA FI CHEMAT PENTRU A INSPECTA STAREA SOLULUI.
 5. ACOPERIRE MINIMA CU BETON 50mm PENTRU FUNDATII.

| | | | | | | | |
|---|------------|------------|---|------|--|------|--|
| Rev. | Descriere | Data | Semnata | Rev. | Descriere | Data | Semnata |
| Acest document este proprietatea S.C. ELLIS'92 S.R.L. si nu va fi comunicat fara autorizare | | | | | | | |
| Intocmit | Verificat | Aprobat | Beneficiar | | Denumire proiect | | |
| M. Andreescu | A. Ionescu | A. Ionescu | CONPET S.A. | | CONSTRUCTIE BEZEMIR NOI PENTRU TITL (A=2500 mc) STATA DE POMPA PANA LAJULUI | | |
|  | | |  | | FUNDATII SCARA ACCES | | Nr.: A643-CB-07 Scara: 1:20; 1/50; 1:100 Index: A643-CB-BD Rev. 0 Data: 09.2018 Plansa: |
| Material: | | | Masa: | | | | |